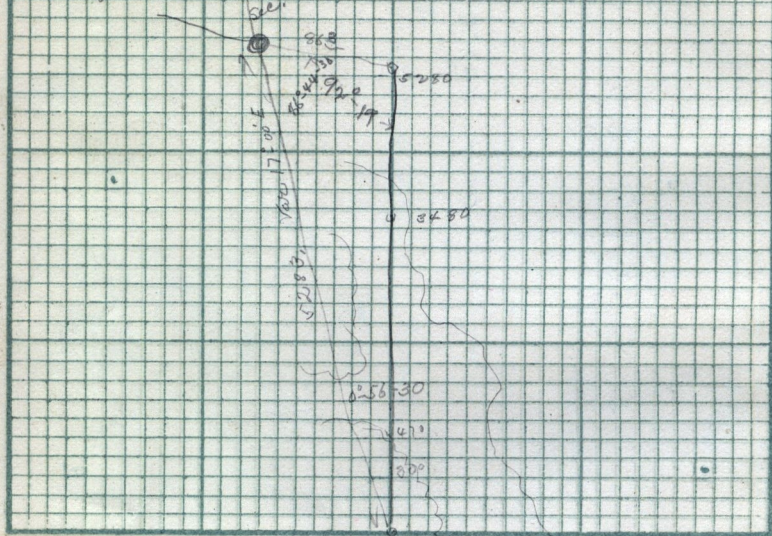


Copy of bond for deed from Thomas Chamberlain to L. C. Manning April 25 - 1889 -  
 Lot 10 - 13 - 1 - Chamberlains Sub. of Block  
 17 - Plat. "C" Ogden City Survey.

Sec 10 - T - 19 - N. R. - 105 - W. of  
 15-30



Scale: .....

□ - site of recent Explosion  
 Chains per inch.  
 of powder mag

Chainmen John Lindergson lead  
 & John Dugman hind

Aug 1st  
 Survey in Wyoming in T-19-N.R-105 W. of the principal  
 meridian. near Rock Springs began at a stone  
 marked 2 notches on S. & 2 notches on E. face being the S.W. cor of  
 Sec 23. thence I ran North on Var. of 16° 30' E 470 ft to foot of  
 hill 3450 - end of old grade at 300 ft the Var = 16-15 at 34  
 = 15:40' at 5250. turned angle from backside on to